

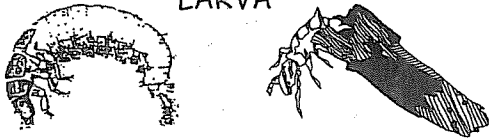


Aquatic Macroinvertebrate

# IDENTIFICATION

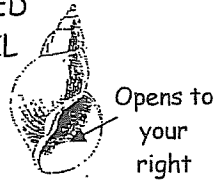
## GROUP ONE-Sensitive to Pollutants

CADDISFLY LARVA



*Abundance indicates good water quality*

GILLED SNAIL

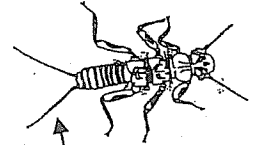


Opens to your right

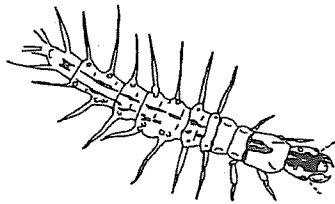


WATER PENNY BEETLE LARVA

STONEFLY NYMPH



two tails



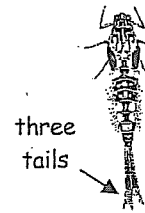
DOBSONFLY LARVA (HELLGRIMATE)



enlarged

RIFFLE BEETLE

← approximate size



three tails

MAYFLY NYMPH



← three tails

## GROUP TWO-Somewhat Sensitive to Pollutants

*Capable of surviving in a wide range of water conditions*

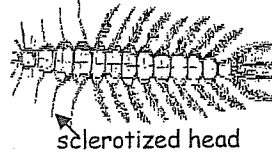
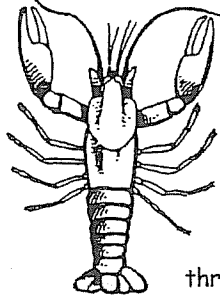


SOWBUG



CLAM

CRAYFISH



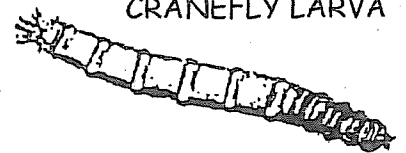
sclerotized head



BEETLE LARVA

three external gills

DAMSELFLY NYMPH



CRANEFLY LARVA

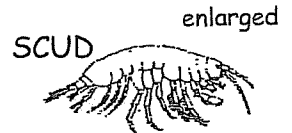


DRAGONFLY NYMPH

internal gills



enlarged



enlarged

SCUD

← approximate size

## GROUP THREE-Very Tolerant to Pollutants

*Abundance indicates poor water quality*

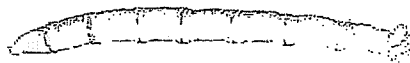


LEECH



BLACKFLY

bulbous end



enlarged

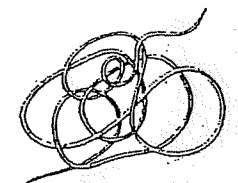
← approximate size

MIDGE LARVA

Opens on your left side



POUCH SNAIL



AQUATIC WORM